

Sign languages and the Common European Framework of References for Languages

Descriptors and approaches to assessment



Photo: Converse College via flickr C.C.2.0: <https://www.flickr.com/photos/conversecollege/16981920564/>

This resource establishes European standards for sign languages for professional purposes in line with the Common European Framework of Reference for Languages (CEFR) and provides an overview of assessment descriptors and approaches.

Resources



A website containing:

- definitions of CEFR proficiency levels for sign languages
- sign language videos and links to related projects and activities
- an assessment cycle for language proficiency in sign languages
- ideas for making good use of the CEFR (article by David Little)

For the first time, we can ensure that content about the teaching and learning of sign languages is available via ECML in International Sign.

Pro-Sign team

EN

International sign

The resources are for

- teachers and teacher trainers
- curriculum developers in tertiary educational environments
- university level educators
- international NGOs

Authors

Lorraine Leeson, Tobias Haug, Christian Rathmann, Beppie Van den Bogaerde

In cooperation with

**Moscow State
Linguistic University**



www.ecml.at/prosign

Take a closer look

Here you will find descriptors for sign language competence across the CEFR-defined levels (A-C). The project team, working with experienced sign language teachers from across Europe agreed on CEFR-aligned descriptors for sign languages, presented here in International Sign and in English. A and B level descriptors have been “road-tested” in tertiary institutions while C level descriptors are notional, and may need refining over time, as we understand more about the process of learning sign languages to a very high level of competency.

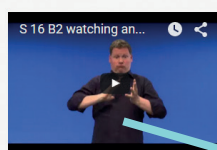
Levels		Competences
A1	A2	Production
B1	B2	Comprehension
C1	C2	Signed Interaction
		Interaction Strategies
		Processing Text
		Pragmatic competencies
		Thematic Development
		Qualitative factors

Comprehension as a member of a live audience.
Comprehension of visual media.
Identifying cues and inferring (signing)
Overall comprehension
Understanding conversation between native signers/speakers
Watching announcements and instructions
Watching tv and film

Watching announcements and instructions

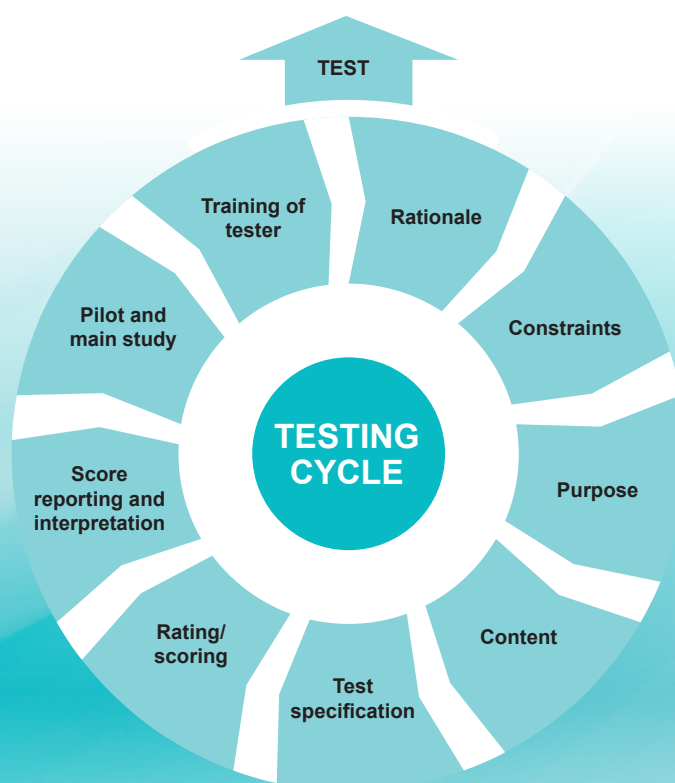
B2

Can understand announcements and messages on concrete and abstract topics signed in a standard or local dialect at normal speed.



Videos explaining the CEFR in International Sign for teachers new to CEFR are available on the website.

The web section dedicated to the assessment cycle presents core concepts related to test development. Here you will learn about concrete steps associated with assessment related to the CEFR and find examples that have been developed for a range of sign languages.



www.ecml.at/prosign